

Non quarter wave single wavelength monitoring

Apogee Optocom
Department of R&D
2022/12/06

Basic Non quarter wave calculation

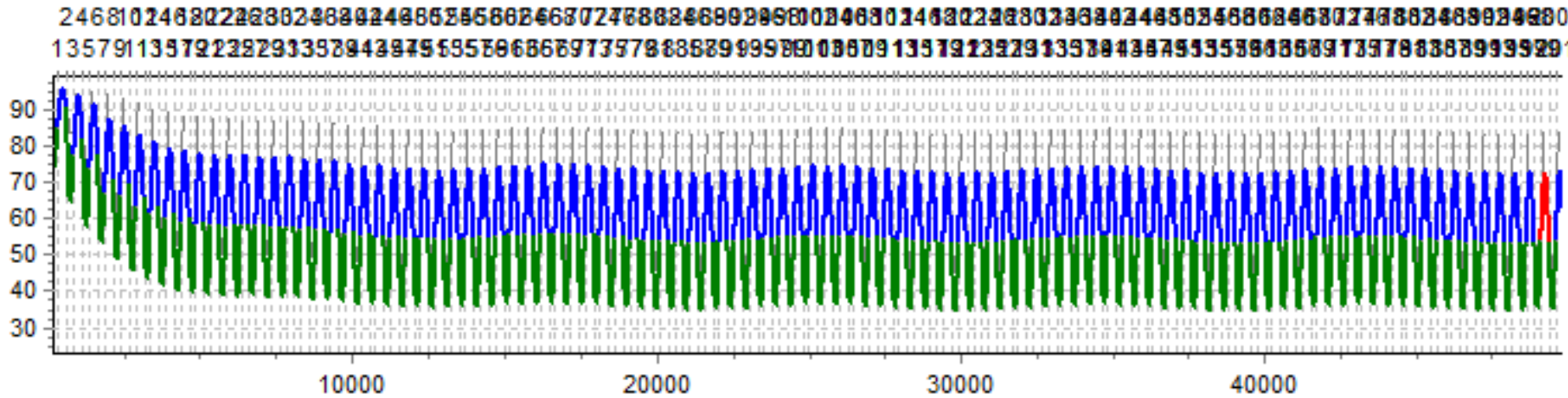
$$\begin{bmatrix} B \\ C \end{bmatrix} = \prod_1^n \begin{bmatrix} \cos\delta_n & \frac{i}{\eta} \sin\delta_n \\ i\eta \sin\delta_n & \cos\delta_n \end{bmatrix} \begin{bmatrix} 1 \\ y_{\text{sub}} \end{bmatrix}$$

$$T = \frac{4\text{Re}(y_{\text{sub}})}{(B + C)(B + C)^*}$$

Design

Deposition	
Number of Layer	200
Monitoring wavelength	1509nm

Runsheets



Error

- End light value compare with design for different method

